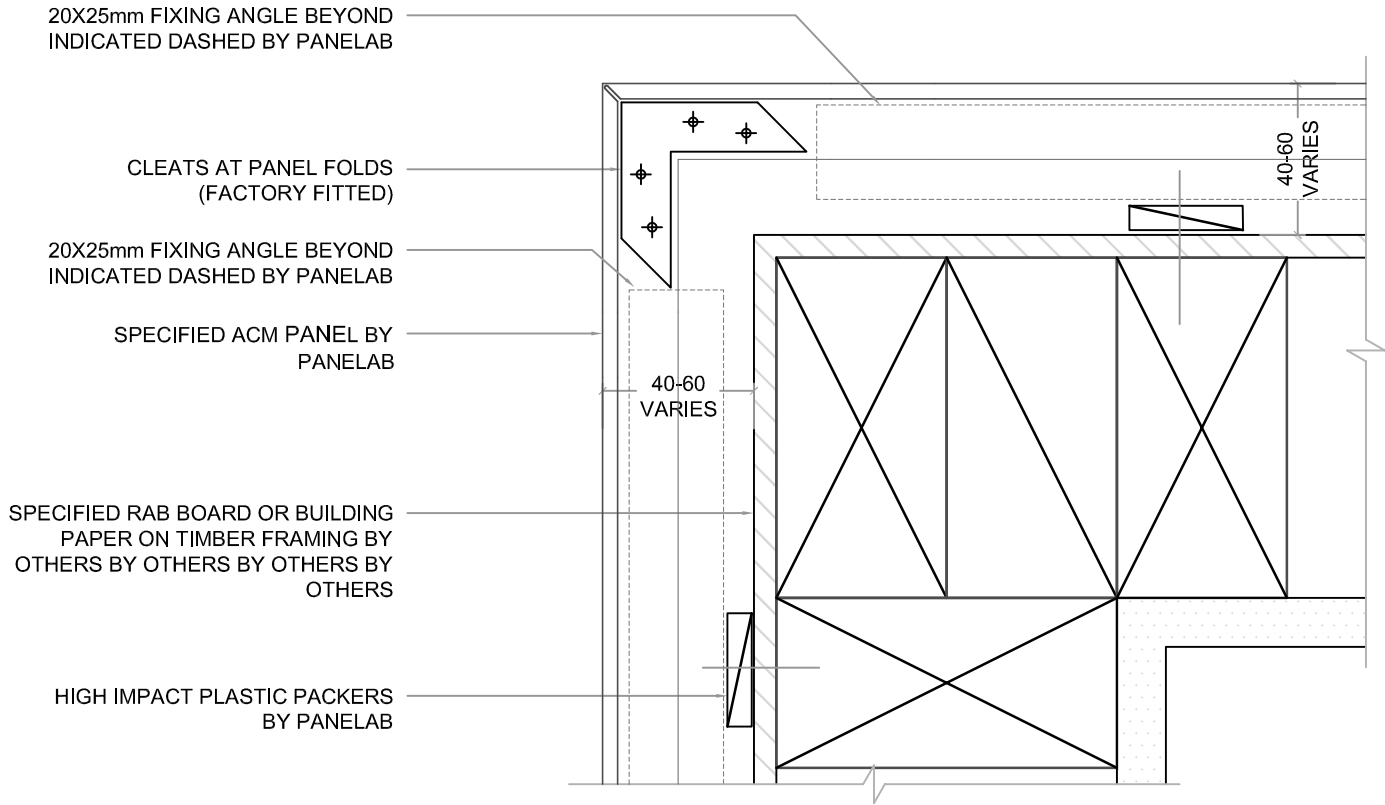
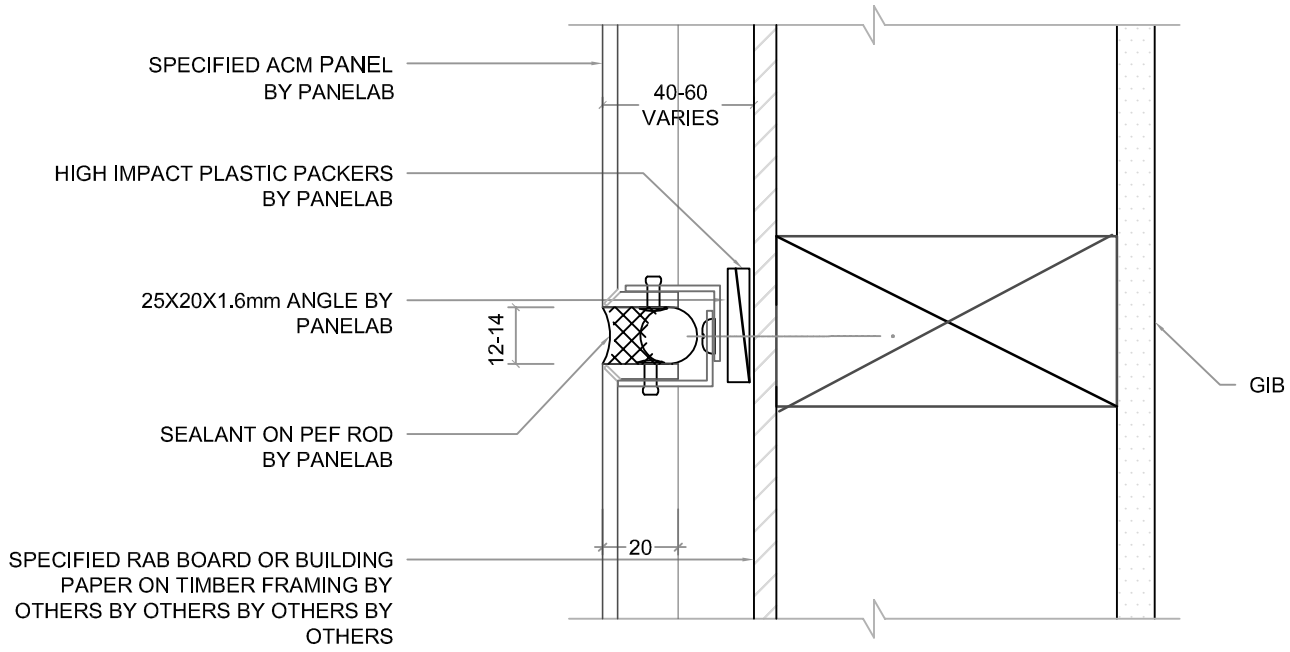




**TYPICAL HORIZONTAL JOINT DETAILS**



1 **TYPICAL CORNER (PLAN DETAIL)**  
- 1:2 @ A4



2 **TYPICAL HORIZONTAL JOINT (SECTION DETAIL)**  
- 1:2 @ A4

NOTE: TIMBER FRAMING TO BE AT 600 CTRS MAX FOR BOTH STUDS & NOGS. MAY BE REQUIRED AT CLOSER CENTERS SUBJECT TO ENGINEERING REQUIREMENTS