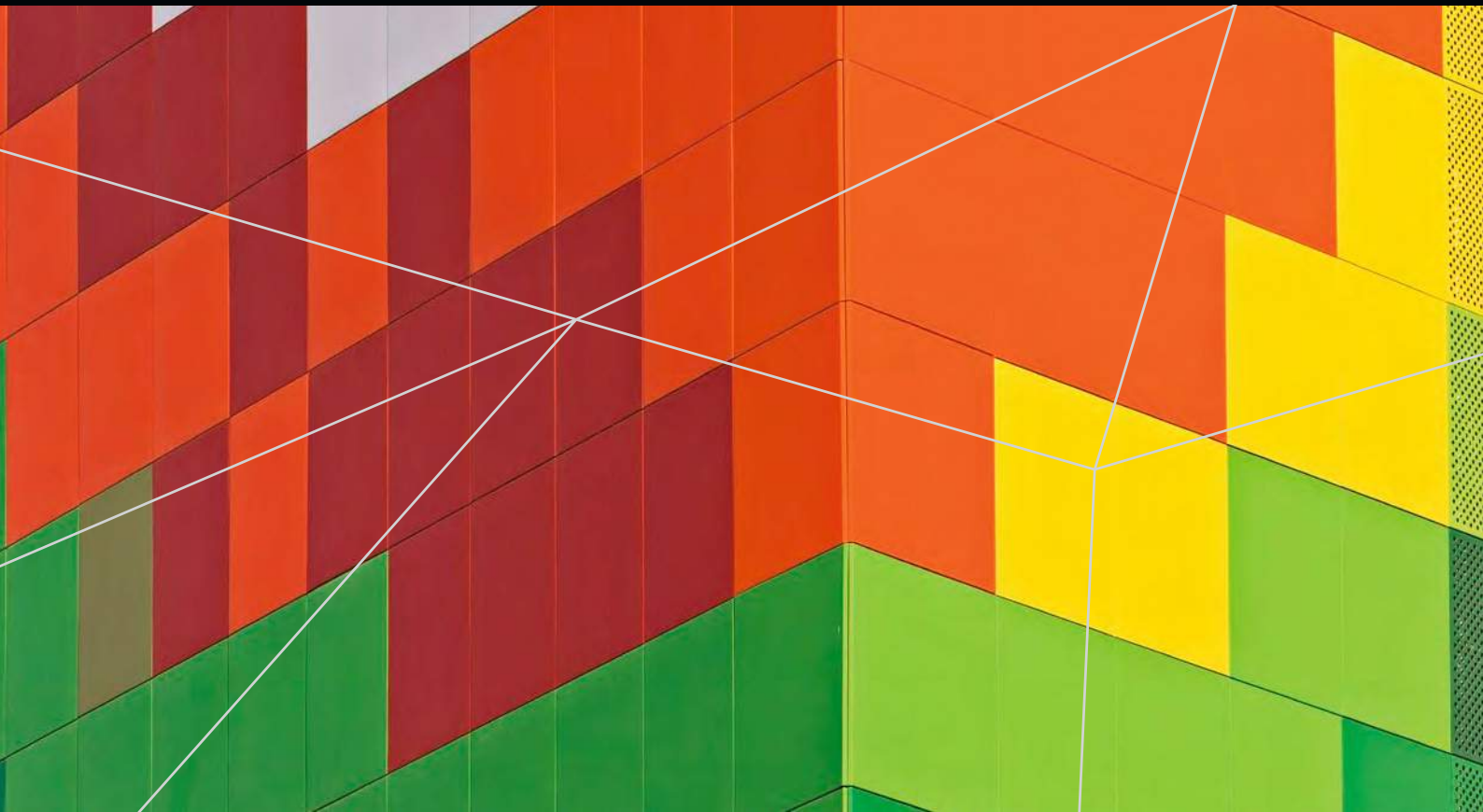


# FAIRVIEW

DEFINING ARCHITECTURE SINCE 1963



## COLOUR CHART

SOLID FINISHES

# FAIRVIEW COLOUR INSPIRATION PRODUCT RANGE

Fairview is proud to provide a stunning collection of colours, inspired by items that have meaning, value and appeal.

The colour chart applies to:

- Vitracore G2
- Vitrabond
- Vitradual

This colour chart can also be used as a guide for:

- Trimo
- Ceramapanel

Please note: The minimum order quantities (MOQ's) listed within this document, are not applicable to both the Trimo and Ceramapanel products. Please contact the Fairview team for clarification.

## SWANSTON SQUARE FEATURING 18 CUSTOM SOLID FINISHES

**LOCATION:** Carlton, VIC  
**ARCHITECT:** ARM Architecture  
**BUILDER:** Probuild Constructions  
**PRODUCT:** Vitrabond

Swanston Square adds a new dimension to Melbourne's urban landscape. The 18 custom Vitrabond colours have been utilised to form a pattern, an interpretation of a topographic map which runs across the building's facade; providing vibrancy against its surrounding grey structures.

Each colour is also featured in the lobbies and in the eight different interior colour palettes for the apartments.

The map extends to the podium carpark at the south-western corner of the tower.

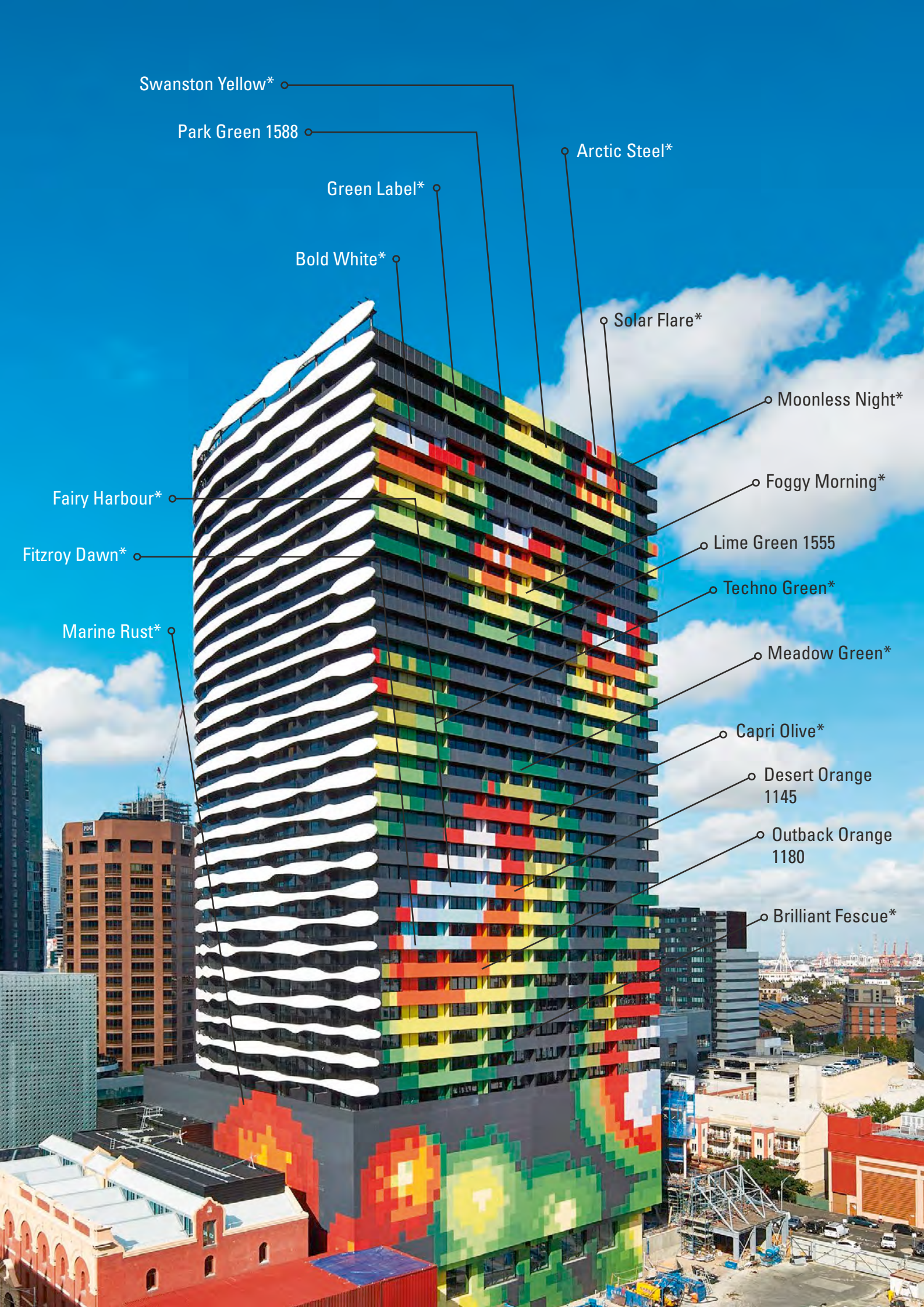
Swanston Square was awarded winner as part of the 2015 Urban Taskforce Development Excellence Awards, for Best High Density Residential Development.

Swanston Square is truly a stunning example of colour utilisation in architecture.

\*Fairview custom colour available on request only.







Swanston Yellow\*

Park Green 1588

Green Label\*

Bold White\*

Arctic Steel\*

Solar Flare\*

Moonless Night\*

Foggy Morning\*

Lime Green 1555

Techno Green\*

Meadow Green\*

Capri Olive\*

Desert Orange  
1145

Outback Orange  
1180

Brilliant Fescue\*

Fairy Harbour\*

Fitzroy Dawn\*

Marine Rust\*





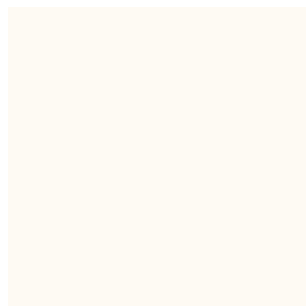
## WHITE INSPIRED BY PURITY

White can represent a successful beginning. In heraldry, white depicts faith and purity.

It affects the mind and body by aiding in mental clarity, promoting feelings of renewal, assisting in cleansing, clearing obstacles and clutter, and encouraging the purification of thoughts and actions.



Pure White 9902



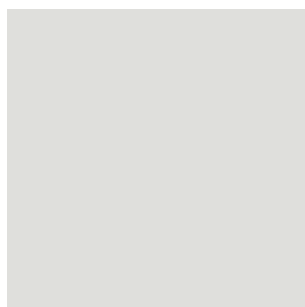
Bold Cream 9702



Natural Cream 9103



Pearl White 1025



Frost White 9210



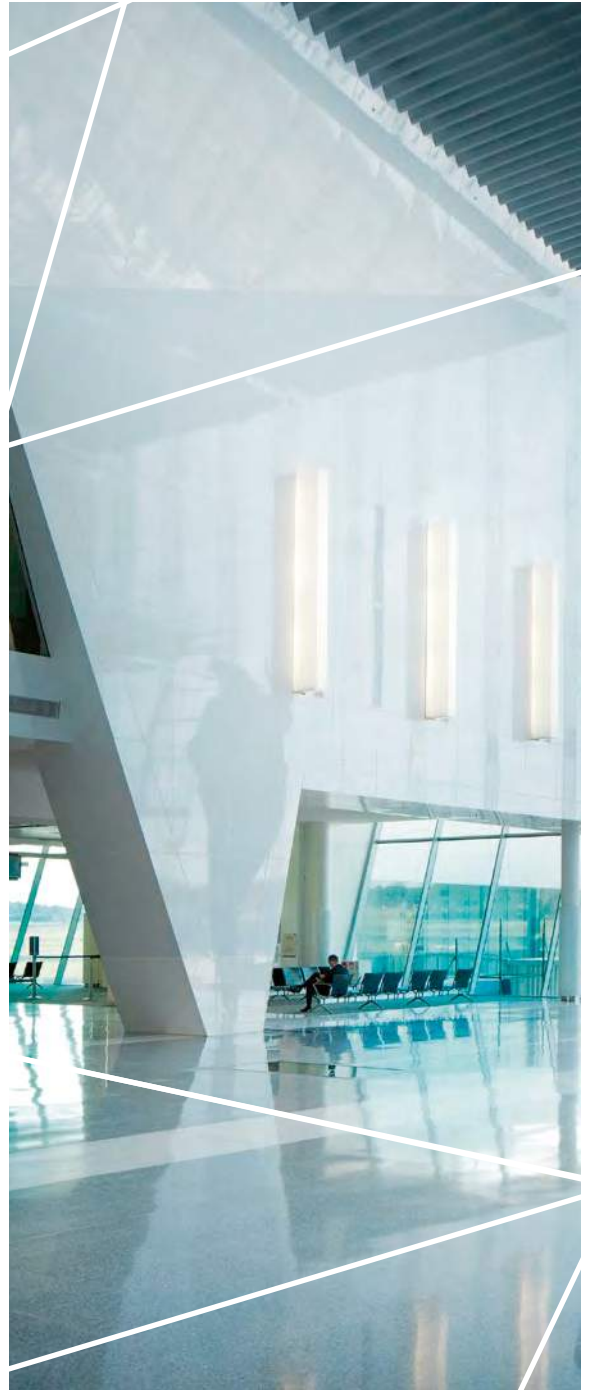
Snow White 1005



✓ No minimum order quantity required. △ Minimum order quantity required. G Gloss.

Disclaimer: Please note that size restrictions may apply to finishes listed with no MOQ's, and thus could still be affected by lead times.

Colours shown are as accurate as possible, however due to the limitations of the printing process and lighting changes we recommend requesting a production sample.



## CANBERRA INTERNATIONAL AIRPORT PEARL WHITE 1025

**LOCATION:** Canberra, ACT  
**ARCHITECT:** Guida Mosley Brown Architects  
**BUILDER:** Construction Control  
**PRODUCT:** Vitrabond

Designed by Guida Mosley Brown Architects; Canberra Airport was voted 'Australian Airport of the Year' at the National Airport Industry Awards in 2013.

The \$420 million infrastructure investment features approximately 25,000m<sup>2</sup> of Vitrabond for both the internal and external facades and was designed to reflect its role as a regional, national and international gateway; utilising design concepts showcased by national institutions throughout Canberra.





## BLACK & GREY

### INSPIRED BY MYSTERY

Grey is formal, conservative, sophisticated and timeless. As grey moves closer to black, the more dramatic and mysterious it becomes.

Black is the absence of colour and can be elegant and prestigious. It is authoritative and powerful; evoking strong emotions and is often associated with mystery, strength and sophistication.



Subtle Grey 1715



Cool Grey 9304



Crux Grey 9504



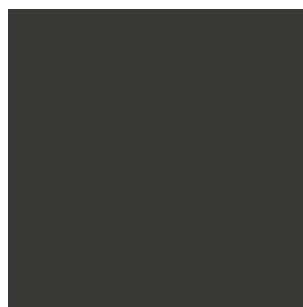
Rune Grey 1740



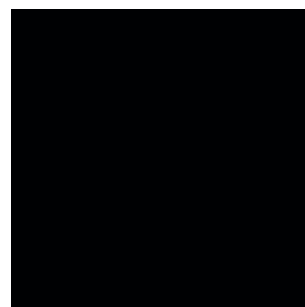
Riddle Grey 1255



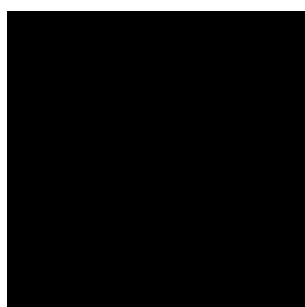
Thriller Grey 1266



Monument Grey 1270



Enigma Black 9130



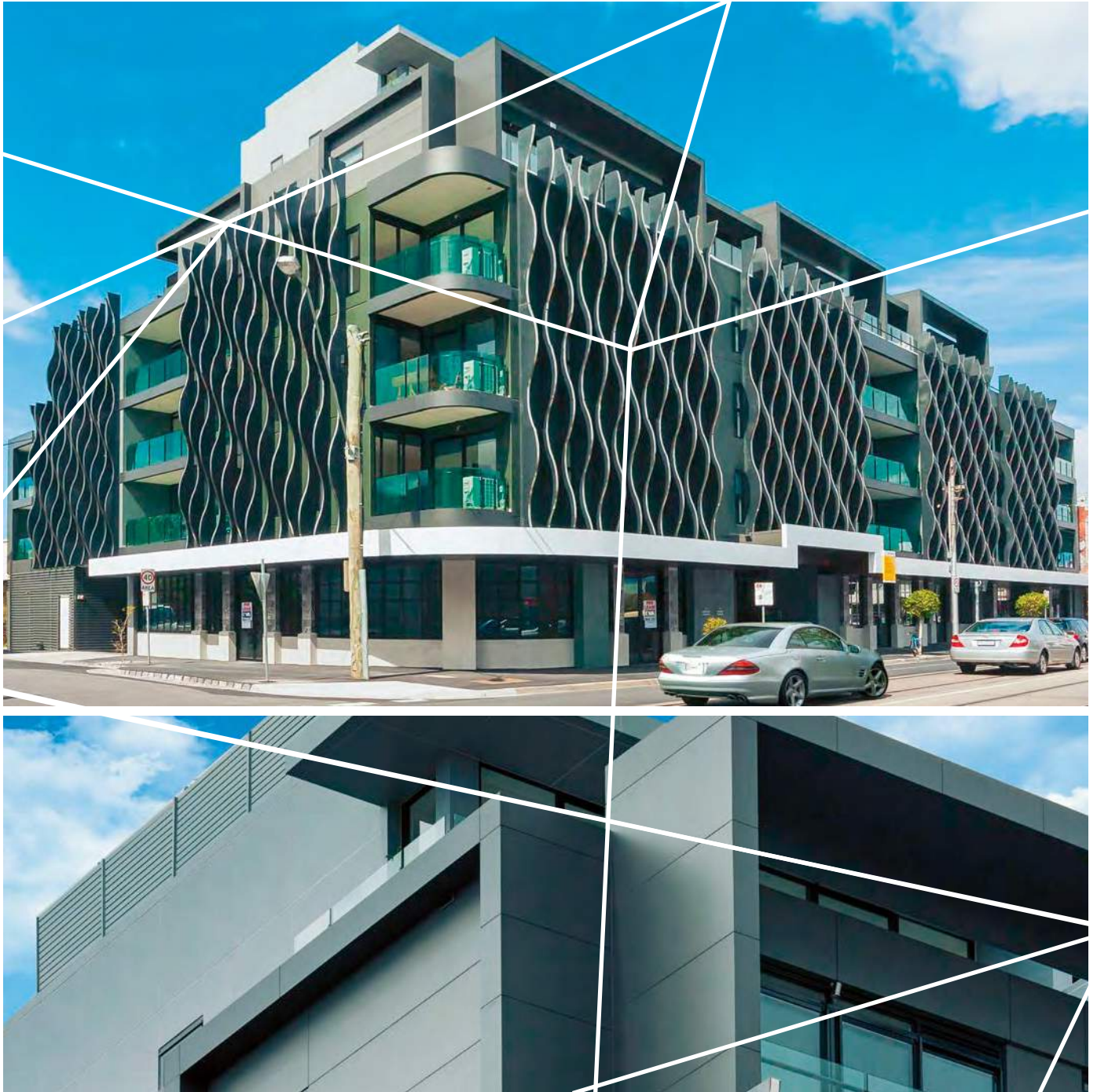
Formal Black 1295



✓ No minimum order quantity required. △ Minimum order quantity required. G Gloss.

Disclaimer: Please note that size restrictions may apply to finishes listed with no MOQ's, and thus could still be affected by lead times. Colours shown are as accurate as possible, however due to the limitations of the printing process and lighting changes we recommend requesting a production sample.





## JOULIA APARTMENTS MONUMENT GREY 1270

**LOCATION:** Brunswick East, VIC  
**ARCHITECT:** MAP Architecture  
**BUILDER:** Hamilton Marino Builders  
**PRODUCT:** Vitrabond

Located in Melbourne's up and coming Brunswick East; Joulia Apartments bring a much needed contemporary edge in an area flush with traditional architecture.

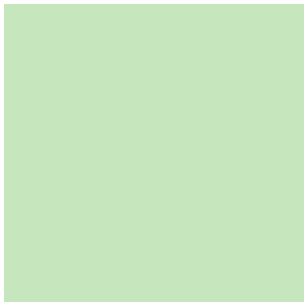
The use of Monument Grey 1270 conveys authority, however the fluid vertical screens soften the structure; drawing the eye to a human scale in the process.



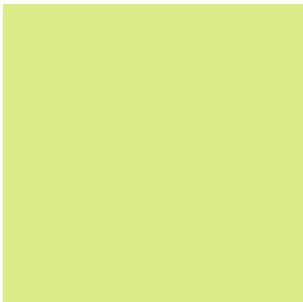
# GREEN INSPIRED BY NATURE

Green is the colour of life, renewal, nature, and energy, and is associated with meanings of growth, harmony, freshness, safety, fertility, and environment.

It has healing power and is understood to be the most restful and relaxing colour to the human eye. Green can help enhance vision, stability and endurance whilst enlightening renewal, growth, and hope.



Fresh Green 1510 




Leaf Green 1520 



Lime Green 1555 



Spring Green 1540 



Grass Green 1580 



Energy Green 1590 



Park Green 1588 



Pine Green 1595 



Forest Green 1599  

 No minimum order quantity required.  Minimum order quantity required.  Gloss.

Disclaimer: Please note that size restrictions may apply to finishes listed with no MOQ's, and thus could still be affected by lead times. Colours shown are as accurate as possible, however due to the limitations of the printing process and lighting changes we recommend requesting a production sample.





## OAK APARTMENTS SPRING GREEN 1540

**LOCATION:** Preston, VIC  
**ARCHITECT:** Petridis Architects  
**BUILDER:** SP Builders  
**PRODUCT:** Vitrabond

Situated just off High Street in Preston; Oak Apartments forms part of the suburban apartment movement in Melbourne.

The utilisation of Spring Green 1540 sets this project apart from those buildings that surround it. Oak Apartments is definitely one of our more striking residential projects.



Blue represents both the sky and the sea, and is associated with open spaces, depth, freedom, intuition, imagination, and sensitivity.

It has positive effects on the mind and the body. As the colour of the spirit, it invokes rest and can cause the body to produce chemicals that are calming and exude feelings of tranquility. Blue helps to slow human metabolism, is cooling in nature, and helps with balance and self-expression.



Coral Blue 1410



Harbour Blue 9207



Sky Blue 1430



Reef Blue 1420



Bay Blue 9107



Marine Blue 1460



Deep Sea Blue 1495



Lake Blue 1490



Horizon Violet 1480



✓ No minimum order quantity required. △ Minimum order quantity required. G Gloss.

Disclaimer: Please note that size restrictions may apply to finishes listed with no MOQ's, and thus could still be affected by lead times. Colours shown are as accurate as possible, however due to the limitations of the printing process and lighting changes we recommend requesting a production sample.





## DEVONPORT POLICE STATION MARINE BLUE 1460

**LOCATION:** Devonport, TAS  
**ARCHITECT:** Philp Lighton Architects  
**BUILDER:** Mead Con  
**PRODUCT:** Vitrabond

The original Devonport Police Station was constructed in 1964 and whilst it was maintained to a satisfactory level; the design and facilities were not appropriate for optimal police services. Philp Lighton Architects was commissioned to design a new station to provide sufficient accommodation for the Mersey State Emergency Unit which was relocated some years back.

Vitrabond Marine Blue was utilised as part of the Tasmania Police branding requirements; providing a distinguishable appearance.



# YELLOW

INSPIRED BY CONFIDENCE

Yellow is the colour of sunshine, hope, and happiness; representing freshness, positivity, clarity, energy, optimism, enlightenment, and joy.

It can be warm, cheerful, increase mental activity and energy, and help activate the memory, encourage communication, enhance vision, build confidence, and stimulate the nervous system.



Spirit Yellow 1110 



Cool Yellow 1125 



Sunshine Yellow 1135 



Bright Yellow 1140 



Poise Yellow 1120 



Golden Yellow 1160 

 No minimum order quantity required.  Minimum order quantity required.  Gloss.

Disclaimer: Please note that size restrictions may apply to finishes listed with no MOQ's, and thus could still be affected by lead times.  
Colours shown are as accurate as possible, however due to the limitations of the printing process and lighting changes we recommend requesting a production sample.





## PORT BOTANY CONTAINER TERMINAL POISE YELLOW 1120

LOCATION: Port Botany, NSW  
ARCHITECT: Woods Bagot  
BUILDER: Grindley Constructions  
PRODUCT: Vitrabond

Port Botany is Australia's second busiest container port, servicing a market supported by the largest population base in Australia.

The three storey Operations building was developed for the ship side workers who occupy the ground floor of the building, with the upper floors for management and clerical staff. Vitrabond was utilised as the façade to achieve a commercial feel; mirroring the clients' intent of the finishes.



## ORANGE INSPIRED BY WARMTH

Orange; the colour of warmth, heat and sunshine, is associated with meanings of enthusiasm, success, encouragement, change, determination, health, stimulation, enjoyment, and fascination.

It is stimulating, vibrant, and flamboyant and is said to help aid decision making.



Sunrise Orange  
1150



Brimstone Orange  
9011



Desert Orange  
1145



Sunset Orange  
1155



Bright Orange  
1190



Outback Orange  
1180



✓ No minimum order quantity required.    △ Minimum order quantity required.    G Gloss.

Disclaimer: Please note that size restrictions may apply to finishes listed with no MOQ's, and thus could still be affected by lead times.  
Colours shown are as accurate as possible, however due to the limitations of the printing process and lighting changes we recommend requesting a production sample.





## A APARTMENTS BRIGHT ORANGE 1190

**LOCATION:** East Brunswick VIC  
**ARCHITECT:** Rothelowman  
**BUILDER:** Hamilton Marino Builders  
**PRODUCT:** Vitrabond

Designed by Rothelowman; A Apartments maximises natural light and seamlessly blurs the boundaries between indoor and outdoor living.

The project boasts Bright Orange 1190, separating A Apartments from surrounding buildings, whilst adopting a 'warehouse' appeal; popular across the Brunswick suburb.



## RED INSPIRED BY COURAGE

Red; the colour of blood and fire, is assertive, daring, determined, energetic, powerful, enthusiastic, impulsive, exciting; representing physical energy, lust, passion, and desire.

It symbolizes action, confidence, and courage whilst being linked to the most primitive physical and emotional needs of survival and self-preservation.



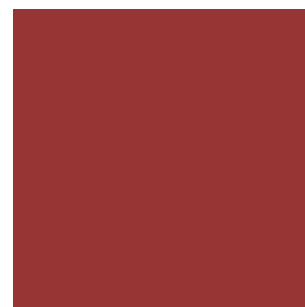
Poppy Red  
1677



Anzac Red  
1670



Gallantry Red 1685



Fortitude Red 1684



Noble Red 1690



Audacity Red 1630



Power Red 1686



Rose Pink 1620



Royal Pink 1640



✓ No minimum order quantity required. △ Minimum order quantity required. G Gloss.

Disclaimer: Please note that size restrictions may apply to finishes listed with no MOQ's, and thus could still be affected by lead times. Colours shown are as accurate as possible, however due to the limitations of the printing process and lighting changes we recommend requesting a production sample.





## METRICON STADIUM

### POPPY RED 1677

LOCATION: Carrara, QLD  
ARCHITECT: Populous  
BUILDER: Watpac Australia  
PRODUCT: Vitrabond

Home to the Gold Coast Suns AFL team; stewardship and sustainability were the guiding principles of Metricon's environmental design, making it Australia's most efficient stadium.

The stadium is well recognised for the use of the striking red; a reflection of the energy and excitement generated through sporting.



## BEIGE & BROWN

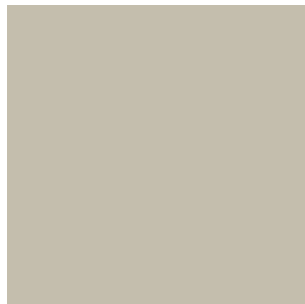
### INSPIRED BY ELEGANCE

Brown; the colour of earth, wood, stone, wholesomeness, reliability, elegance, home, and honesty. It is a natural, neutral colour that is typically associated with the seasons of autumn and winter.

The colour brown represents steadfastness, simplicity, friendliness, dependability, and health.



Opulent Beige 1320 



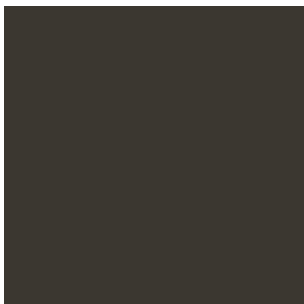
Classic Beige 1310 




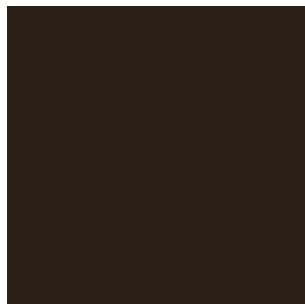
Ornate Brown 1350 



Elegant Brown 9108 



Cultured Grey Brown  1283

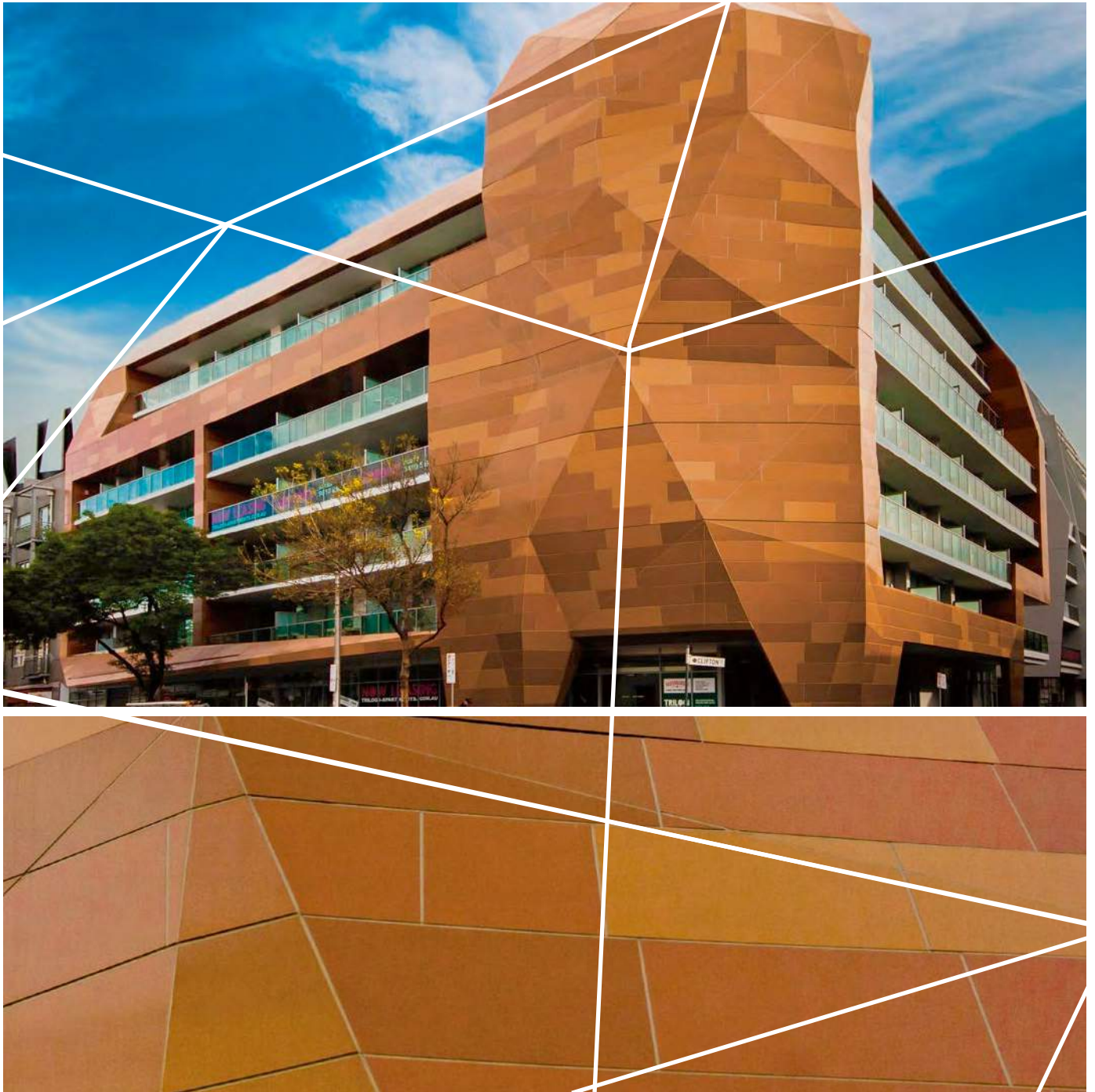


Majestic Brown 1370 

 No minimum order quantity required.  Minimum order quantity required.  Gloss.

Disclaimer: Please note that size restrictions may apply to finishes listed with no MOQ's, and thus could still be affected by lead times.  
Colours shown are as accurate as possible, however due to the limitations of the printing process and lighting changes we recommend requesting a production sample.





## TRILOGI APARTMENTS ORNATE BROWN 1350

**LOCATION:** Prahran, VIC  
**ARCHITECT:** Plus Architecture  
**BUILDER:** Contexx  
**PRODUCT:** Vitrabond

Plus Architects had a vision for this project: to develop three unique buildings that represented 'paper, scissors, rock', aimed at creating an unmistakable design differentiation from other developments in the area.

Fairview worked tirelessly with Plus Architects and Cayden to develop the colours, effect and appeal of the 'Rock' building, both parties had visualised. This project allowed us to take an innovative approach, developing various mock-ups in-house and ultimately presenting the chosen solution.



# FAIRVIEW

DEFINING ARCHITECTURE SINCE 1963

## AUSTRALASIA

P / +61 2 6352 2355

helpdesk@fv.com.au

## NORTH AMERICA

P / +1 860 242 2711

helpdesk.na@fv.com.au

## UNITED KINGDOM

P / +0844 800 7131

helpdesk.uk@fv.com.au

[WWW.FV.COM.AU](http://WWW.FV.COM.AU)